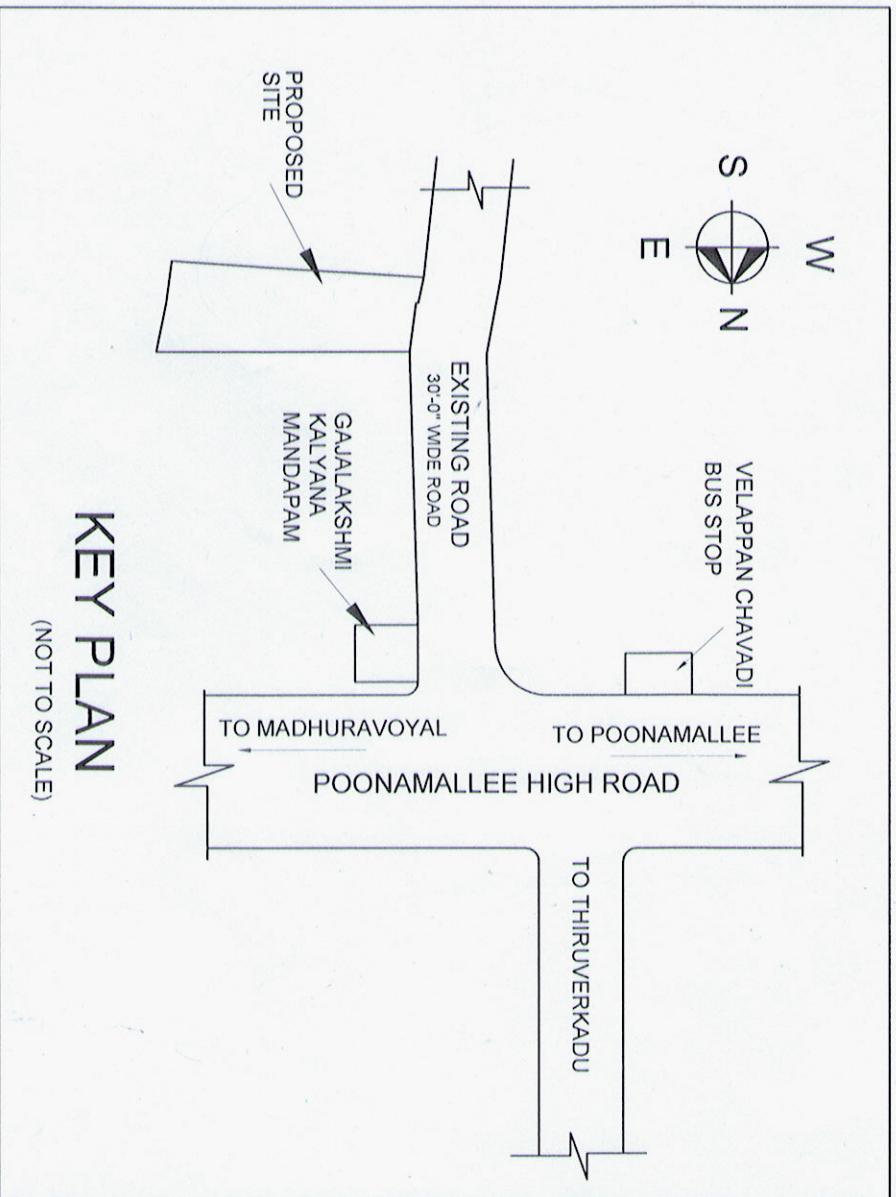
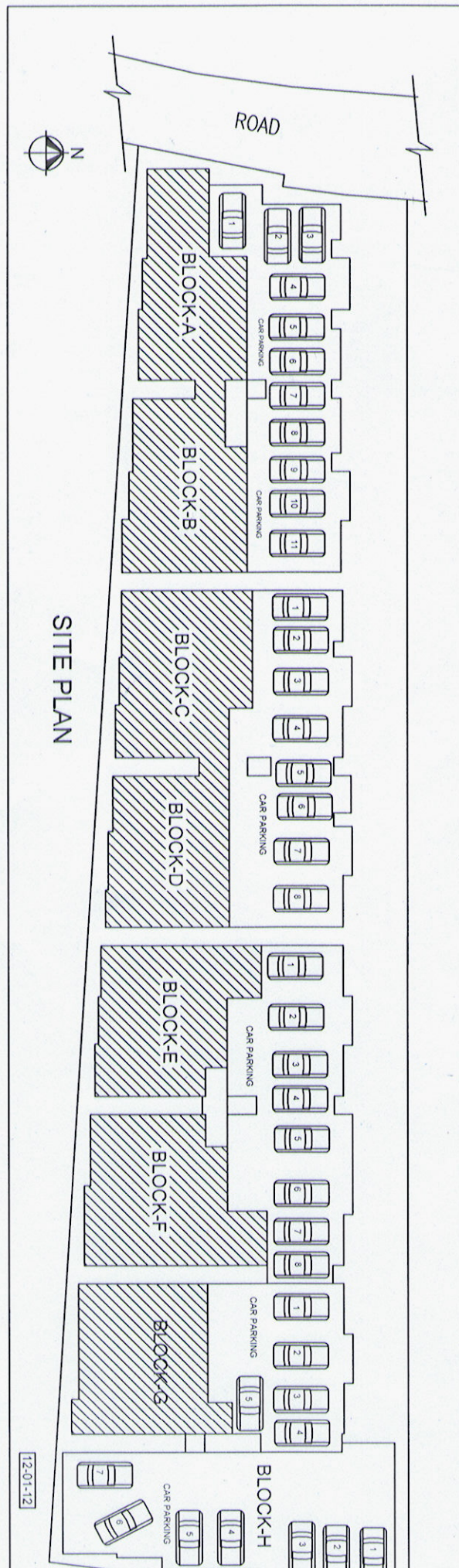
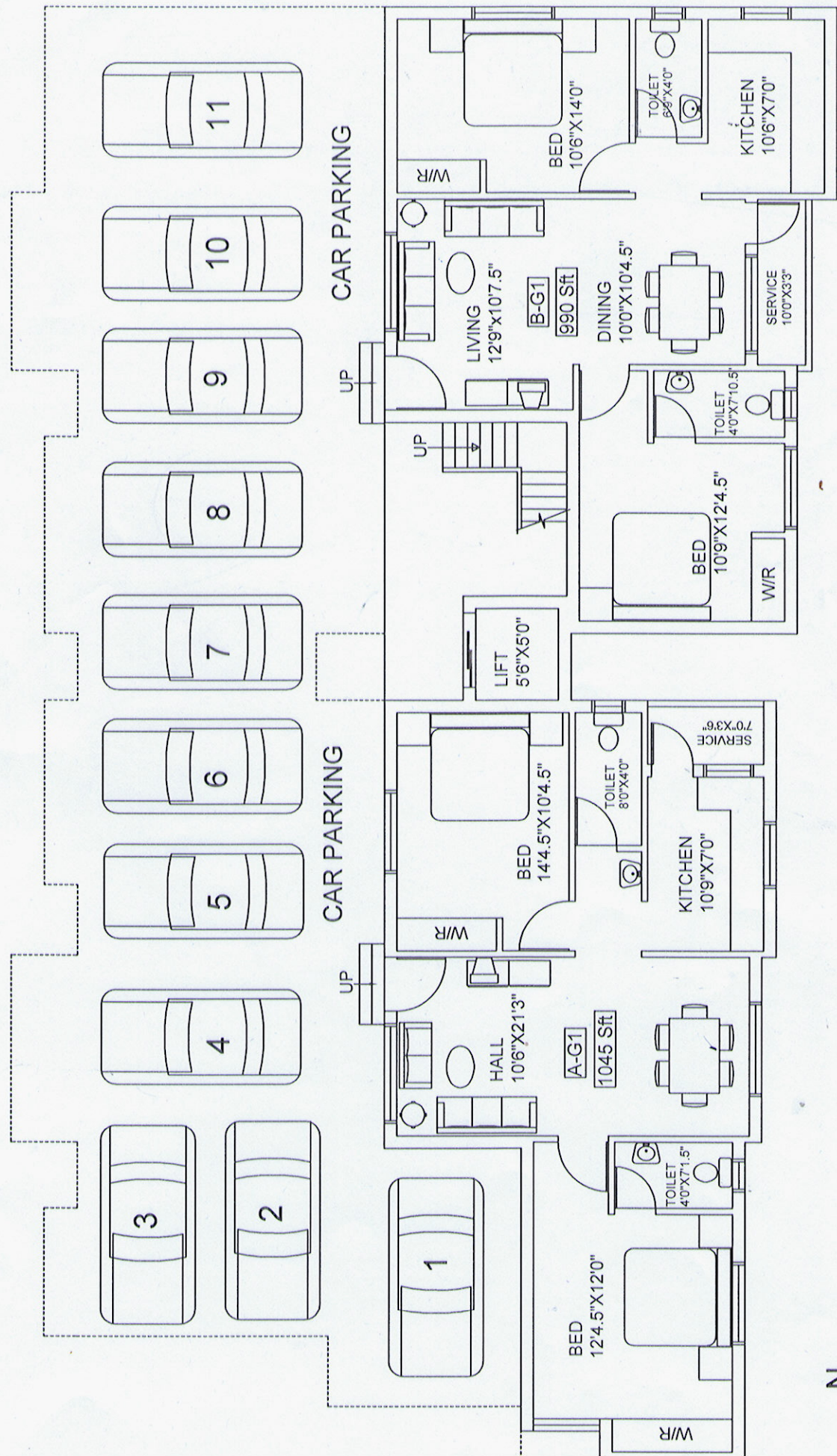




KEY PLAN



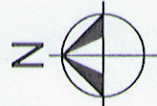


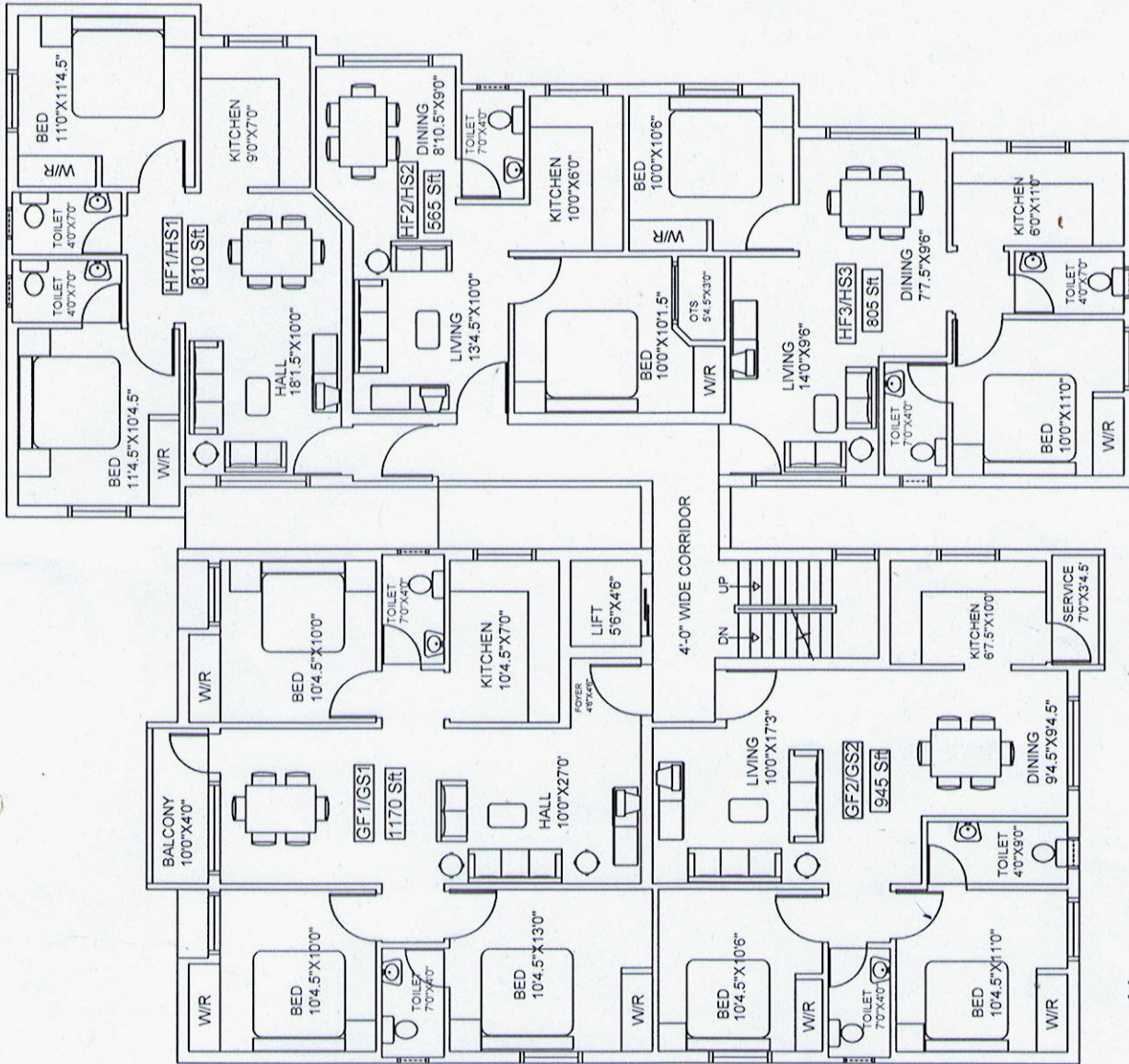


GROUND FLOOR PLAN

BLOCK-A & B

12-01-12

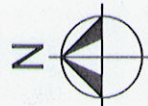
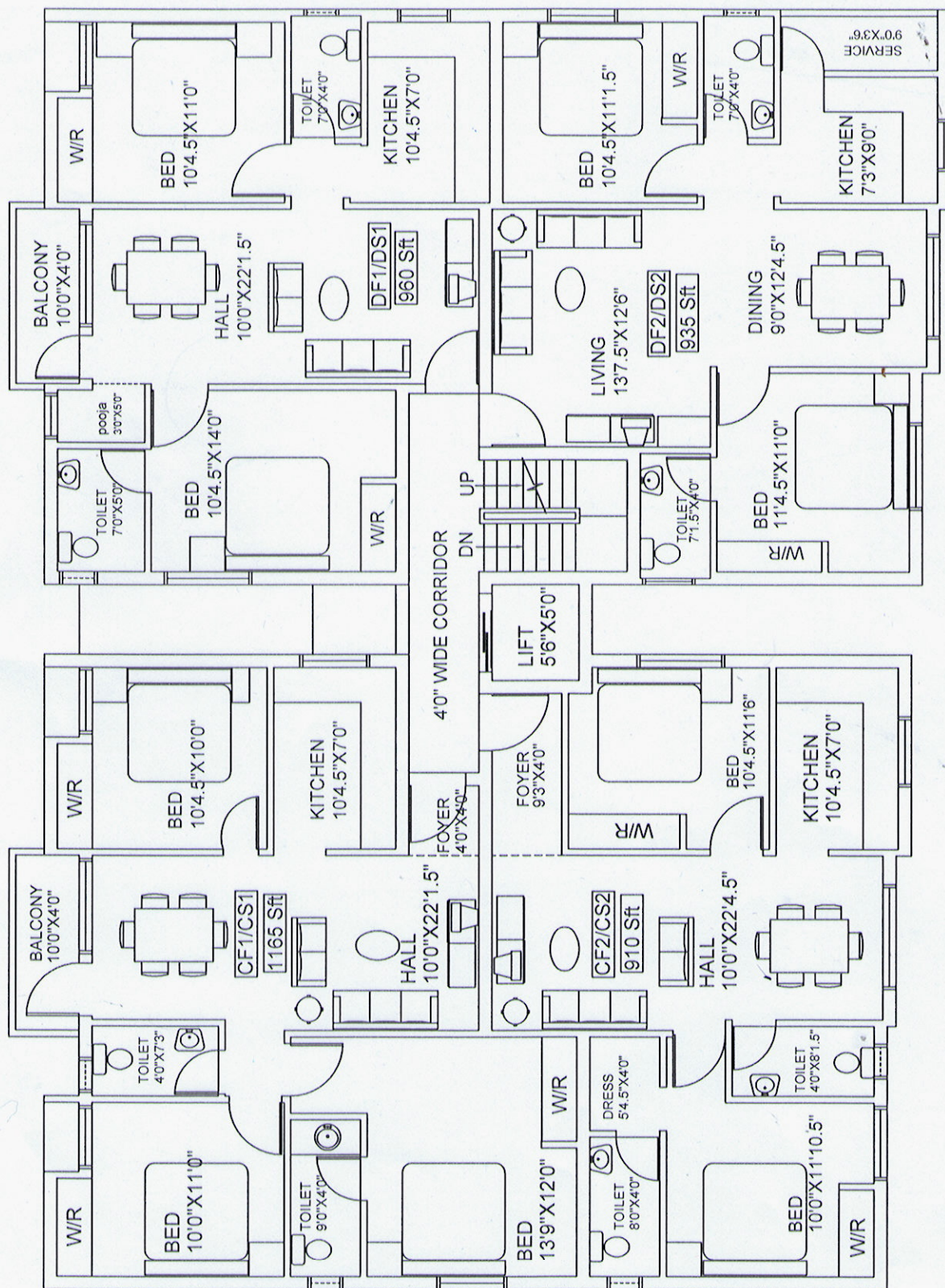




TYPICAL FLOOR PLAN
(FIRST & SECOND FLOOR)

BLOCK-G&H

12-01-12



TYPICAL FLOOR PLAN
(FIRST & SECOND FLOOR)

BLOCK-C & D

12-01-12

Specifications

Structure

Reinforced Cement Concrete Framed Structure

Roof

Reinforced Cement Concrete roof with Weathering course and high quality pressed tiles for terrace

Walls

Wall Tiles

Kitchen glazed tiles to a height of 2'0" (Two feet over the counter) toilet glazed tiles to a height of 7'0" (Seven feet)

Wall Finishing

Neatly plastered and two coat of colour wash with cement-based paint. Ceiling with three Coat of whitewash.

Flooring

Vitrified tiles

Wardrobe

Wardrobe / cupboard in all bed rooms and Kitchen without Shutters. Each bedroom and kitchen with one loft at any one side of the room.

Kitchen

Stainless steel sink and polished granite top for kitchen platform. Provision for Aqua guard installation.

Doors

Main doors with teak solid panelled shutter with varnish, other doors with Seasoned wood frame and flush door with Enamel paint.

Windows

Fully glazed windows with Country wood frame and shutters fitted with mild steel grills of standard pattern finished with enamel paints

Locks

Main doors to have a Godrej or its equivalent lock with safety chain and magic eye. All other bedroom doors to have lock with handle.

Sanitary fittings

1. Water closet of Orissa Pan in common toilet
2. Washbasin - 1No. of size 16" x 22" at Common toilet or at dining.
3. E.W.C at toilet in bedroom with high level flush tank.

Water Supply

Ground water with bore well with overhead tank and pump set. Underground sump with motor will be provided to store water. Underground septic tank will be provided for drainage arrangement. Bore well, sump and septic tank shall be provided.

Electrical Installation

Concealed conduit wiring with copper wire of I.S. make throughout the building with adequate light points and sockets of three phase supply with switches. Provision for AC. in both bedrooms. Television and Telephone in bedroom and hall.

Lift

5 Passengers Lift is provided with ARD Facility